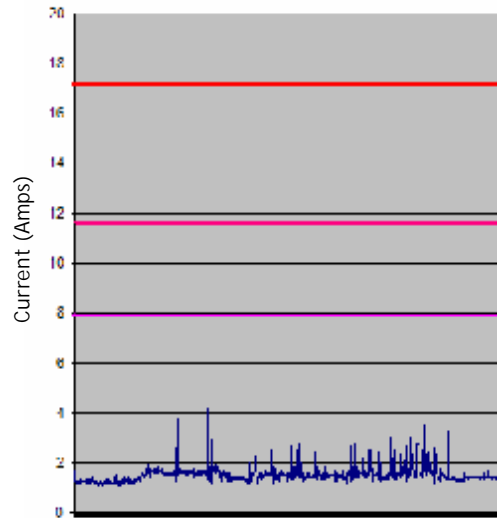


Translating Power

ratings into current limits



Blue line is a digital Raptor doing 3D

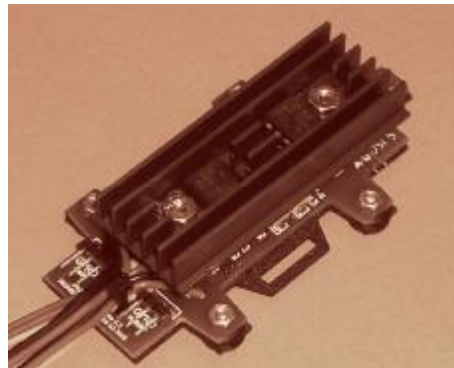
The Arizona Regulator is rated in Watts, because the current limit **moves**, based on load. These limits are affected by battery voltage “droop” as it is loaded, and the voltage setpoint of the adjustable output. Current limits are shown above (based on power)*, for a regulator with the adjustable voltage at 6V (red), 5.5V (pink), and 5.0V (purple). Note that the higher output voltage means the regulator does not have to work as hard, and therefore the current limits are higher.

*using 2s2p Li+ pack, 4800mA-h Relions, and based on **no** forced convection

WANTED:

A quality, flight-tested regulator designed specifically for RC helicopters. Must be rated for sagebrush-mowin', 3D flyin', high noon bein', Tucson summers.

DELIVERED!



Alive, not Dead!

ARIZONA

DUAL VOLTAGE HELI REGULATOR



www.fromeco.org

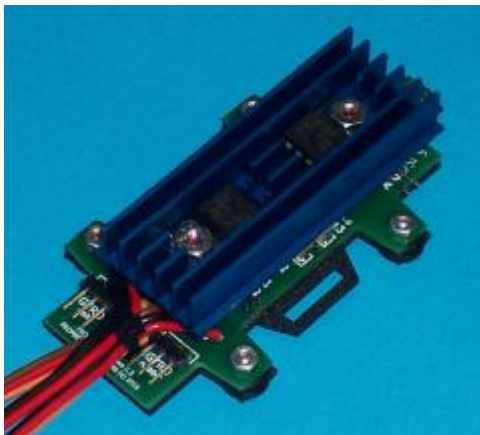
flyfromeco@fromeco.org

503.310.5194 (sales & service)

Arizona Regulator:

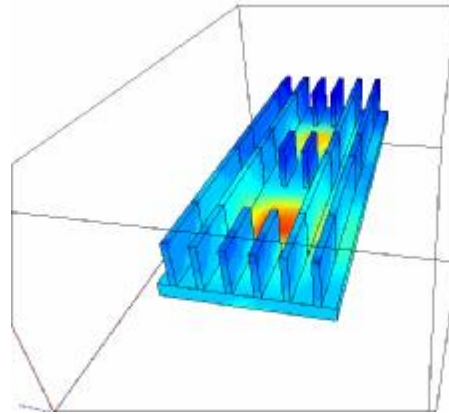
Dual Voltage Heli Regulator

The Arizona Heli Regulator is specifically designed with RC helicopters in mind. It can handle very high currents, in very demanding environments. It has two separate voltage outputs: 5V for the gyro, and an adjustable 5 to 6.25V for the receiver...allowing better responsiveness for the digital servos not associated with the gyro system. It also can act as a solid state switch, eliminating a mechanical switch in the power path. The solid state switching uses a 'pin and flag' system, so *there are no moving parts in flight...*



Arizona is rated to flow more amps than the battery can put out!!

Specifications:



Designed with desert conditions in mind!

Power (no airflow):	17 watts*
Power (1m/sec airflow):	28 watts
Load regulation/droop (max):	0.05 volts
Voltage output:	5V (gyro)
and:	5 to 6.25V
	(adjustable)
Off-state current:	<= 84uA
	(2mA-h/day)
Mass (regulator+wires):	43 grams
Mass (mounting plate):	7 grams

***Please see “translating power ratings to current limits”. Regulator is capable of delivering up to 15A into a 6V load, given 1.5A to the gyro and when using a 2s2p Li+ pack (FROMECO 4800mA-h Relions)**

Setup & Use

Arizona installs cleanly; the gyro plugs directly into the regulator. The system uses the same leads that pull the gyro signal from the RX, to send power back to it. A mechanical switch can be eliminated by using Arizona's built-in solid state switch feature. Arizona comes with a vibration-isolating protective mounting plate made of chemical-resistant Delrin. Arizona's circuit board features a protective conformal coating, to withstand the 2-cycle environment.

Arizona's input wiring can be upgraded from standard JR, to high current Fast480 wire, with choice of high current connectors.

FROMECO would like to thank:

Design Working Group:

- Dave Daniel
- Tom De Winter
- Andrew Palmer
- Mike Sherman and others...

Beta Flight Testers (in addition to above):

- Troy Lapp
- Jason Stiffey and others...

FROMECO Scale Avionics LLC
37628 Greenmountain St
Sandy, OR 97055

Phone: 503.310.5194
(sales & service)

E-mail: flyfromeco@fromeco.org
Web: www.fromeco.org